

## **NEW ERRA DOORS**

New Erra Doors Corp DBA Custom Door and Millworks

Florida Impact Approval:

FL #11436-R5

FBC VERSION: 2020

# Certificate of Independence

Rule 61G20-3 F.A.C. | Report No. 2071-CI, , Rev. 3 | Project No. 420-0611 | 1/24/21 | Page 1 of 1

## Product Manufacturer

New Era Door Corp.  
dba Custom Door and Millwork  
2787 N. Airport Rd., Unit No. 410  
Fort Myers, Florida 33907

## Product Name, Model and/or Description

Impact Double Glazed Doors with Transom – Outswing and Inswing  
Impact Double Opaque Entry Door – Outswing and Inswing

**Code:** Current Edition of the Florida Building Code including the 7<sup>th</sup> Edition (2020) Florida Building Code

**Compliance Method:** Product Approval Rule 61G20-3.009 – Certification of Independence

## **Certificate of Independence per Product Approval Rule 61G20-3.009**

PTC Product Design Group, LLC and Robert J. Amoruso,  
P.E. does not have, nor will acquire, any financial  
interest in the company manufacturing or distributing  
product(s) covered by this Product Evaluation Report.

PTC Product Design Group, LLC and Robert J. Amoruso,  
P.E. do not have, nor will acquire any financial interest  
in any other entity involved in the approval process or  
testing of the product(s) covered by this Product  
Evaluation Report.

Robert J. Amoruso, P.E.  
FL P.E. License Number 49752



# Equivalency Evaluation Report

Rule 61G20-3 F.A.C. | Report No. 2071-EER, , Rev. 3 | Project No. 420-0611 | 1/24/21 | Page 1 of 2

## Product Manufacturer

New Era Door Corp.  
dba Custom Door and Millwork  
2787 N. Airport Rd., Unit No. 410  
Fort Myers, Florida 33907

## Product Name, Model and/or Description

Impact Double Glazed Doors with Transom – Outswing and Inswing  
Impact Double Opaque Entry Door – Outswing and Inswing

**Code:** Current Edition of the Florida Building Code including the 7th Edition (2020) Florida Building Code

**Compliance Methods:** Product Approval Rule 61G20-3.015(5)(d) – Equivalency of Standards

- Impact Double Glazed Doors with Transom – Outswing and Inswing
  - CDM0003, Rev. D, dated 1/24/21, signed and sealed by Robert J. Amoruso, Custom Door and Millworks, Impact Double Glazed O.S. Door with Transom – Outswing and Inswing – Installation Anchorage Details
  - CTLA 1850W-1, dated September 09, 2008
- Impact Double Opaque Entry Door – Outswing and Inswing
  - CDM0004, Rev. D, dated 1/24/21, signed and sealed by Robert J. Amoruso, Custom Door and Millworks, Impact Double Opaque Entry Door – Outswing and Inswing – Installation Anchorage Details
  - CTLA 1850W, dated September 09, 2008

## **Performance Standards (used in testing):**

- ASTM E330-02, Test Method for Structural Performance of Exterior Windows, Curtain Walls and Doors by Uniform Static Air Pressure Difference.
- ASTM E547-00, Water Penetration of Exterior Windows and Doors by Static Air Pressure Difference.
- ASTM E283-04, Standard Test Method for Determining Rate of Air Leakage Through Exterior Windows, Curtain Walls, and Doors Under Specified Pressure Differences Across the Specimen
- ASTM E1886-05, Standard Test Method for Performance of Exterior Windows, Glazed Curtain Walls, Doors and Storm Shutters Impacted by Missiles and Exposed to Cyclic Pressure Differentials.
- ASTM E1996-05, Standard Specification for Performance of Exterior Windows, Curtain Walls, Doors and Storm Shutters Impacted by Windborne Debris in Hurricanes.

## **Equivalency Evaluation:**

The current Edition of the Florida Building Code including the 7th Edition (2020) Florida Building Code – Building and Residential require the following revision levels for the product testing standards listed above.

- ASTM E330-02 & 14
- ASTM E547; not referenced in the FBC or FRC.
- ASTM E283- 04 (2012)
- ASTM E1886-12
- ASTM E1996-12a

The above code-referenced performance standards were reviewed against the revision level of the standards employed in testing and found to be equivalent. Therefore, all testing is in conformance with the current edition of the Florida Building Code including the 7th Edition (2020) Florida Building Code – Building and Residential Volumes and Test Protocols.



# Equivalency Evaluation Report

Rule 61G20-3 F.A.C. | Report No. 2071-EER, , Rev. 3 | Project No. 420-0611 | 1/24/21 | Page 2 of 2

## **Certificate of Independence per Product Approval Rule 61G20-3.009**

PTC Product Design Group, LLC and Robert J. Amoruso, P.E. does not have, nor will acquire, any financial interest in the company manufacturing or distributing product(s) covered by this Product Evaluation Report. PTC Product Design Group, LLC and Robert J. Amoruso, P.E. do not have, nor will acquire any financial interest in any other entity involved in the approval process or testing of the product(s) covered by this Product Evaluation Report.

Evaluated by:  
Robert J. Amoruso, P.E.  
FL PE License No. 49752



# Product Evaluation Report

Rule 61G20-3 F.A.C. | Report No. 2071-PER, Rev. 3 | Project No. 420-0611 | 1/24/21 | Page 1 of 2

## Product Manufacturer

New Era Door Corp.  
dba Custom Door and Millwork  
2787 N. Airport Rd., Unit No. 410  
Fort Myers, Florida 33907

## Product Name, Model and/or Description

Impact Double Glazed Door with Transom – Outswing and Inswing  
Impact Double Opaque Entry Door – Outswing and Inswing

**Code:** Current Edition of the Florida Building Code including the 7th Edition (2020) Florida Building Code

**Compliance Method:** Product Approval Rule 61G20-3.005(1)(d) – Product Evaluation Report by a Licensed Professional Engineer

**Product Name, Model and/or Designation; Test Report No.; and Installation Drawing No.:**

- Impact Double Glazed Doors with Transom – Outswing and Inswing
  - CDM0003, Rev. D, dated 1/24/21 signed and sealed by Robert J. Amoruso, Custom Door and Millworks, Impact Double Glazed O.S. Door with Transom – Outswing and Inswing – Installation Anchorage Details
  - CTLA 1850W-1, dated September 09, 2008
- Impact Double Opaque Entry Door – Outswing and Inswing
  - CDM0004, Rev. D, dated 1/24/21, signed and sealed by Robert J. Amoruso, Custom Door and Millworks, Impact Double Opaque Entry Door – Outswing and Inswing – Installation Anchorage Details
  - CTLA 1850W, dated September 09, 2008

## **Component Approvals:**

- Laminate Glass Interlayer: Uvekol Laminated Glass Interlayer by Allnex USA Inc. per current Miami-Dade Notice of Acceptance found [here](#).

## **Engineering Analysis & Evaluation:**

- Anchorage engineering (Report No. 1133-Calc & 1119-Calc) in accordance with the current edition of the Florida Building Code, signed and sealed by Robert J. Amoruso, P.E., FL License Number 49752.
- Report No. 2568, Rev. 0, dated 7/3/18, signed and sealed by Robert J. Amoruso, P.E. FL No. 49752, Title: Product Evaluation of Door Lock Component Interchangeability to Custom Door & Millworks Wood Entry Doors
  - Von Duprin (Allegion) WS9827/9927 and/or WS9857/9957 Multi-Point exit device can be used as a replacement for the Emtek 8450 Cylinder Lock with single cylinder dead bolt & steel surface bolts with strike plates used in testing.
- Report No. 2597, Rev. 0, dated 6/4/19, signed and sealed by Robert J. Amoruso, P.E. FL No. 49752, Title: Product Evaluation of Custom Door & Millwork Inswing Wood Entry Doors

## **Performance Standards (used in testing):**

- ASTM E330-02, Test Method for Structural Performance of Exterior Windows, Curtain Walls and Doors by Uniform Static Air Pressure Difference.
- ASTM E547-00, Water Penetration of Exterior Windows and Doors by Static Air Pressure Difference.
- ASTM E283-04, Standard Test Method for Determining Rate of Air Leakage Through Exterior Windows, Curtain Walls, and Doors Under Specified Pressure Differences Across the Specimen
- ASTM E1886-05, Standard Test Method for Performance of Exterior Windows, Glazed Curtain Walls, Doors and Storm Shutters Impacted by Missiles and Exposed to Cyclic Pressure Differentials.
- ASTM E1996-05, Standard Specification for Performance of Exterior Windows, Curtain Walls, Doors and Storm Shutters Impacted by Windborne Debris in Hurricanes.



# Product Evaluation Report

Rule 61G20-3 F.A.C. | Report No. 2071-PER, Rev. 3 | Project No. 420-0611 | 1/24/21 | Page 2 of 2

## Limitations & Conditions of Use:

- The following product has been evaluated for outside the High Velocity Hurricane Zone (HVHZ).
  - Impact Double Glazed Doors with Transom – Outswing and Inswing
  - Impact Double Opaque Entry Door – Outswing and Inswing
- The following product will not require an approved impact protective system when used in wind borne debris regions including the HVHZ.
  - Impact Double Glazed Doors with Transom – Outswing and Inswing
  - Impact Double Opaque Entry Door – Outswing and Inswing
- Refer to Product Installation Instructions noted above for:
  - Maximum allowable wind loads at related maximum allowable size(s).
  - Overall dimensions and material/grade of main product components, accessories, etc.
  - Illustrated diagrams of the attachment of the product to substrate structure.
  - Anchor type(s), size(s), substrate(s), embedment, edge distance, and spacing/locations.
- Site wind pressures shall be determined by a licensed professional engineer in accordance with the current edition of the Florida Building Code (and/or ASCE 7 as referenced in the current edition of the Florida Building Code) for components and cladding based on allowable stress design.
- Site conditions not covered in this product evaluation document are subject to additional engineering analysis by a licensed professional engineer or registered architect as required by the authority having jurisdiction.
- Adequacy of the existing structural substrates as a main wind force resisting system capable of withstanding and transferring applied product loads to the foundation is the responsibility of the licensed professional engineer or registered architect acting as the design professional of record for the project of installation.

## Certificate of Independence per Product Approval Rule 61G20-3.009

PTC Product Design Group, LLC and Robert J. Amoruso, P.E. does not have, nor will acquire, any financial interest in the company manufacturing or distributing product(s) covered by this Product Evaluation Report.

PTC Product Design Group, LLC and Robert J. Amoruso, P.E. do not have, nor will acquire any financial interest in any other entity involved in the approval process or testing of the product(s) covered by this Product Evaluation Report.

Evaluated By:  
Robert J. Amoruso, P.E.  
FL P.E. License Number 49752



# **CERTIFICATION OF PARTICIPATION**

**National Accreditation and Management Institute, Inc.  
confirms that:**

**New Erra Doors, LLC dba Custom Door and Millwork  
2787 N. Airport Road #410  
Fort Myers, Florida 33907**

**Participates within a Quality Assurance Program  
that complies with ISO/IEC 17020 and Guide 53**

**New Erra Doors, LLC dba Custom Door and Millwork's  
Quality Assurance ID # 1345-1**

**Quality Assurance Program for products  
manufactured or assembled at referenced location.**



---

**Thomas D. Wix, Quality Assurance Manager**

**Certificate Valid From 12/21/2020 to 12/31/2021**

**The NAMI Program is recognized as an approved quality assurance entity  
within the State of Florida # QUA1789.**

# NOTICE OF PRODUCT CERTIFICATION



CERTIFICATION NO: NI009646-R6  
DATE: 10/02/2008  
CERTIFICATION PROGRAM: Structural  
COMPANY: New Erra  
CODE: 1345-1  
REVISION DATE: 08/28/2020

To verify that the "Notice of Product Certification" is valid, please visit [www.NAMICertification.com](http://www.NAMICertification.com) to assure that the product is active and currently listed. This certification represents product conformity to the applicable specification and that certification criteria has been satisfied. A NAMI approved certification label must be applied to the product to claim certification status. Please review and advise NAMI if any corrections are required to this document.

COMPANY NAME AND ADDRESS	PRODUCT DESCRIPTION
New Erra Doors, LLC dba Custom Door & Millworks 2787 N. Airport Road, #410 Fort Myers, FL 33907	<b>"Mara Macho" Mahogany Out-Swing Double Glazed Entry Door w/Arch Transom</b>  One Active Panel/One Inactive Panel w/Fixed Transom  Configuration: O/XX Glazing: Monolithic Laminate - 1/4" Tempered Glass/ 0.100" Uvekol PVB Interlayer/1/4" Heat Strengthened Glass  Frame: W-6'3" H-13'4" Panel: W-3'0" H-10'0" Transom: W-6'3" H-3'2"

SPECIFICATION	PRODUCT RATING
ASTM E283-04/E330-02/E547-00 ASTM E1886-05/E1996-05	Design Pressure: +55/-55 psf Wind Zone 4 - Missile Level D

Product Tested By: Certified Testing Laboratories  
Report No: CTLA-1850W-1  
Expiration Date: September 30, 2021

Administrator's Signature: \_\_\_\_\_

**NATIONAL ACCREDITATION AND  
MANAGEMENT INSTITUTE, INC.**

4794 George Washington Memorial Highway  
Hayes, VA 23072  
Tel: (804) 684-5124  
Fax: (804) 684-5122



# NEW ERRA DOORS CORP, dba CUSTOM DOOR AND MILLWORK

## IMPACT DOUBLE GLAZED DOORS W/ TRANSOM

## OUTSWING AND INSWING

## INSTALLATION ANCHORAGE DETAILS

GENERAL NOTES:

1. THE PRODUCT SHOWN HEREIN IS DESIGNED TO COMPLY WITH THE CURRENT EDITION OF THE FLORIDA BUILDING CODE, BUILDING AND RESIDENTIAL VOLUMES EXCLUDING THE HIGH VELOCITY HURRICANE ZONE (HVHZ) AT THE DESIGN PRESSURES STATED HEREIN.
2. THE PRODUCT DETAILS CONTAINED HEREIN ARE BASED UPON SIGNED AND SEALED TEST REPORT(S) NO. CTLA 1850W-1 AND ASSOCIATED LABORATORY DRAWINGS.
3. ADEQUACY OF THE EXISTING STRUCTURAL CONCRETE / MASONRY AND 2X FRAMING AS A MAIN WIND FORCE RESISTING SYSTEM CAPABLE OF WITHSTANDING AND TRANSFERRING APPLIED PRODUCT LOADS TO THE STRUCTURE IS THE RESPONSIBILITY OF THE ENGINEER OR ARCHITECT OF RECORD.
4. 1X AND 2X BUCKS (WHEN USED) SHALL BE DESIGNED AND ANCHORED TO PROPERLY TRANSFER ALL LOADS TO THE STRUCTURE. BUCK DESIGN AND INSTALLATION IS THE RESPONSIBILITY OF THE ENGINEER OR ARCHITECT OF RECORD.
5. THIS PRODUCT DOES NOT REQUIRE AN IMPACT PROTECTIVE SYSTEM THAT COMPLIES WITH THE CURRENT EDITION OF THE FLORIDA BUILDING CODE, BUILDING AND RESIDENTIAL VOLUMES IN THE WIND BORNE DEBRIS REGION. THE PRODUCT IS IMPACT-RESISTANT TO WIND ZONE 4, MISSILE LEVEL D.
6. DOOR FRAME AND PANEL MATERIAL: MAHOGANY.
7. GLASS MEETS THE REQUIREMENTS OF ASTM E1300-04e1. SEE SHEET 6 OR 7 FOR GLAZING DETAIL.
8. DESIGNATION "X" STANDS FOR OPERABLE PANEL - SEE ELEVATION ON SHEET 2.
9. HARDWARE TESTED:

9.1 EMTEK 8450 CYLINDER LOCK WITH SINGLE CYLINDER DEAD BOLT.

9.2 STEEL SURFACE BOLTS WITH STRIKE PLATES. TWO HANDLE STYLES SHOWN FOR OUTSWING VS. INSWING. OTHER STYLES ACCEPTABLE.

PERFORMANCE RATING			
CONFIGURATION	DESIGN PRESSURE RATING	IMPACT RATING	WATER PENTRATION RATING
OUTSWING	+/-55 PSF	WIND ZONE 4 MISSILE LEVEL D	YES (Note 1)
INSWING	+/-55 PSF	WIND ZONE 4 MISSILE LEVEL D	NONE (Note 2)
WATER PENETRATION TESTING NOTES			
1) OUTSWING CONFIGURATION TESTED FOR WATER PENETRATION IN ACCORDANCE WITH ASTM E547. THEREFORE, INSTALLATION APPROVED FOR ALL LOCATIONS WHERE WATER PENETRATION RESISTANCE IS REQUIRED.			
2) INSWING CONFIGURATION NOT TESTED FOR WATER PENETRATION IN ACCORDANCE WITH ASTM E547. THEREFORE, INSTALLATION APPROVED ONLY FOR LOCATIONS WHERE WATER PENETRATION RESISTANCE IS NOT REQUIRED OR WHERE A OVERHANG MEETING THE REQUIREMENTS OF THE FBC HAVE BEEN MET. SEE BELOW FOR OVERHANG REQUIREMENTS.			
In accordance with 7th Edition (2020) Florida Building Code Section 1709.5.2, Exception 1 & 2 & 7th Edition (2020) Florida Residential Code Section R609.3, Exception 1 & 2. Door assemblies may be installed where the overhang (OH) ratio is equal to or more than 1 need not be tested for water infiltration. The overhang ratio shall be calculated by the following equation: OH ratio = OH Length/OH Height where: OH Length = The horizontal measure of how far an overhang over a door projects out from the door's surface. OH Height = The vertical measure of the distance from the door's sill to the bottom of the overhang over a door.			

INSTALLATION NOTES:

1. ONE (1) INSTALLATION ANCHOR IS REQUIRED AT EACH ANCHOR LOCATION SHOWN.
2. THE INSTALLATION ANCHOR SPACING DEPICTED DICTATES THE MINIMUM NUMBER OF ANCHORS TO BE USED FOR PRODUCT INSTALLATION. ANCHORS ARE TO MATCH TYPE, SIZE, AND EMBEDMENT OF THOSE SHOWN HEREIN FOR RESPECTIVE SUBSTRATE.
3. SHIM AS REQUIRED AT EACH INSTALLATION ANCHOR WITH LOAD BEARING SHIM(S). MAXIMUM ALLOWABLE SHIM SIZE IS 1/4 INCH. SHIM WHERE SPACE OF 1/16 INCH OR GREATER OCCURS. SHIM(S) SHALL BE CONSTRUCTED OF HIGH DENSITY PLASTIC OR BETTER.
4. FOR INSTALLATION INTO WOOD FRAMING, USE #12 WOOD SCREWS OF SUFFICIENT LENGTH TO ACHIEVE 1 1/2 INCH MINIMUM EMBEDMENT. MINIMUM EDGE DISTANCE SHALL BE 7/8 INCH TO EDGE OF SUPPORTING WOOD SUBSTRATE.
5. FOR INSTALLATION THROUGH 1X BUCK TO CONCRETE / MASONRY, OR DIRECTLY INTO CONCRETE / MASONRY, USE 3/16 INCH ITW TAPCONS (ADVANCED THREADFORM TYPE) OF SUFFICIENT LENGTH TO ACHIEVE 1 1/2 INCH MINIMUM EMBEDMENT INTO CONCRETE AND 1 INCH MINIMUM EMBEDMENT INTO MASONRY (CMU). MINIMUM EDGE DISTANCES SHALL BE 1-1/8 INCH IN CONCRETE AND 2 INCHES INTO MASONRY (CMU).
6. ALTERNATE CONCRETE / MASONRY / WOOD INSTALLATION ANCHORS OF EQUIVALENT PERFORMANCE CHARACTERISTICS CAN BE USED UPON APPROVAL BY THE ARCHITECT OR ENGINEER OF RECORD.
7. MINIMUM EMBEDMENT AND EDGE DISTANCE EXCLUDE WALL FINISHES (INCLUDING BUT NOT LIMITED TO STUCCO, FOAM, BRICK VENEER, AND SIDING).
8. INSTALLATION ANCHORS AND ASSOCIATED HARDWARE MUST BE MADE OF CORROSION RESISTANT MATERIAL OR HAVE A CORROSION RESISTANT COATING DISSIMILAR METALS OR MATERIALS IN CONTACT WITH PRESSURE TREATED WOOD MUST BE PROTECTED TO PREVENT REACTION.
9. FOR HOLLOW BLOCK AND GROUT FILLED BLOCK, DO NOT INSTALL INSTALLATION ANCHORS INTO MORTAR JOINTS. EDGE DISTANCE IS MEASURED FROM FREE EDGE OF BLOCK OR EDGE OF MORTAR JOINT INTO FACE SHELL OF BLOCK.
10. INSTALLATION ANCHORS SHALL BE INSTALLED IN ACCORDANCE WITH ANCHOR MANUFACTURER'S INSTALLATION INSTRUCTIONS AND ANCHORS SHALL NOT BE USED IN SUBSTRATES WITH STRENGTHS LESS THAN THE MINIMUM STRENGTH SPECIFIED BY THE ANCHOR MANUFACTURER AND/OR AS REQUIRED BELOW IN NOTE 11.
11. INSTALLATION ANCHOR CAPACITIES FOR PRODUCTS HEREIN ARE BASED ON SUBSTRATE MATERIALS WITH THE FOLLOWING PROPERTIES:

11.1. WOOD - MINIMUM SPECIFIC GRAVITY OF 0.42.

11.2. CONCRETE - MINIMUM COMPRESSIVE STRENGTH OF 2500 psi

11.3. MASONRY - STRENGTH CONFORMANCE TO ASTM C-90, MEDIUM WEIGHT WITH DENSITY > 117 PCF.

DRAWING SHEET INDEX	
SHEET	DESCRIPTION
1	GENERAL AND INSTALLATION NOTES
2	ELEVATION AND ANCHOR LAYOUT
3	ADDITIONAL APPROVED CONFIGURATIONS
4	OUTSWING INSTALLATION - VERTICAL SECTIONS
5	INSWING INSTALLATION - VERTICAL SECTIONS
6	OUTSWING INSTALLATION - HORIZONTAL SECTIONS - GLAZING DETAIL
7	INSWING INSTALLATION - HORIZONTAL SECTIONS - GLAZING DETAIL

PROJECT #420-0611

01/24/21

RJA

DATE

BY

NEW ERRA DOORS CORP, dba CUSTOM DOOR & MILLWORK

2787 N. AIRPORT RD., UNIT NO. 410

FORT MYERS, FLORIDA 33907

TITLE: IMPACT DOUBLE GLAZED DOORS W/TRANSOM, O/S & I/S

GENERAL AND INSTALLATION NOTES

PREPARED BY: BB

DRAWN BY: BB

DATE: 09/25/08

SCALE: N.T.S.

DRAWING NO: CDM0003

REV: D

SHEET: 1 OF 7

PTC PRODUCT DESIGN GROUP, LLC

PO BOX 520775

LONGWOOD, FLORIDA 32752

FBPE C.A. NO. 25935

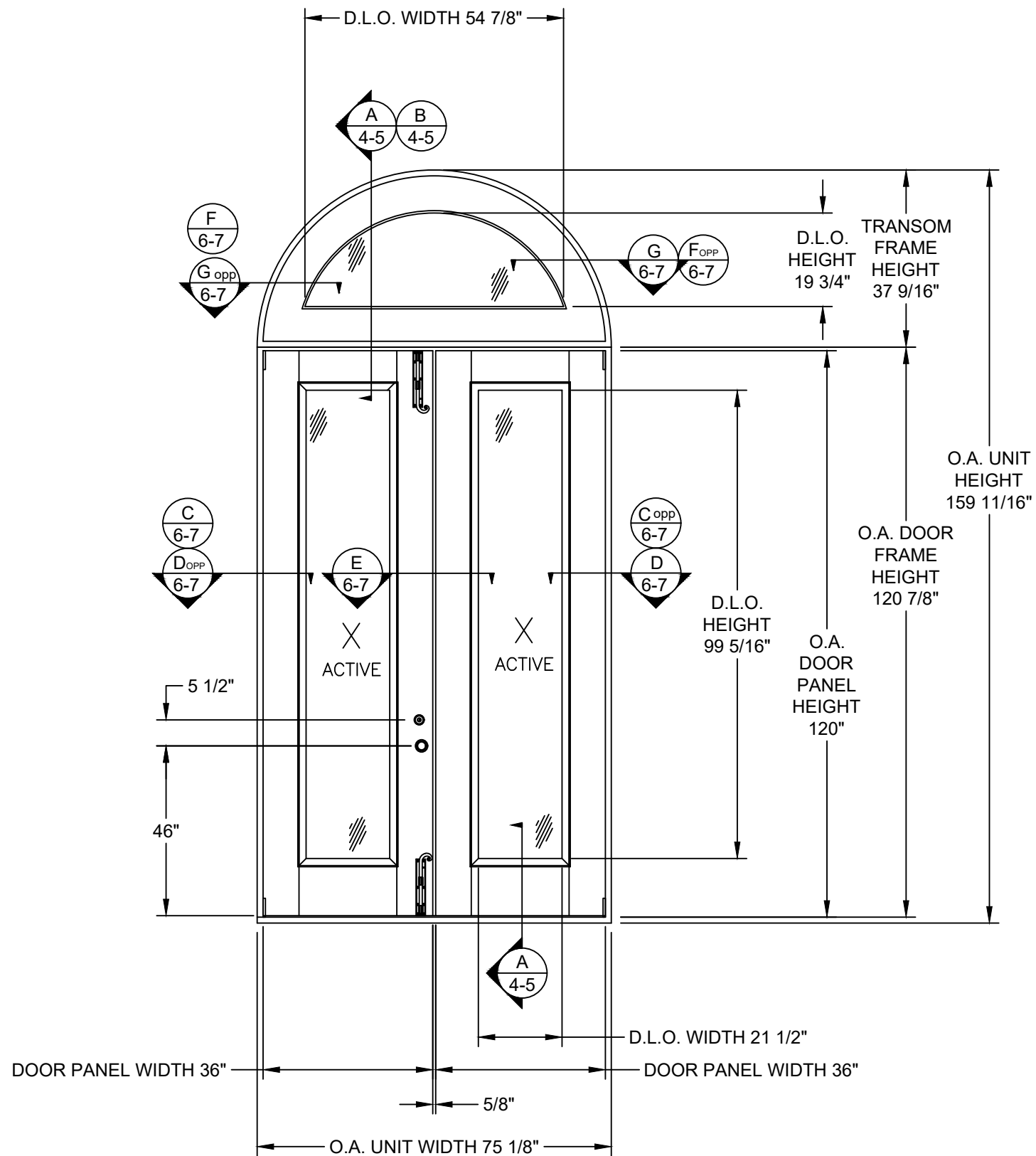
Phone: 321.690.1788

Fax: 321.690.1789

Email: info@ptc-corp.com

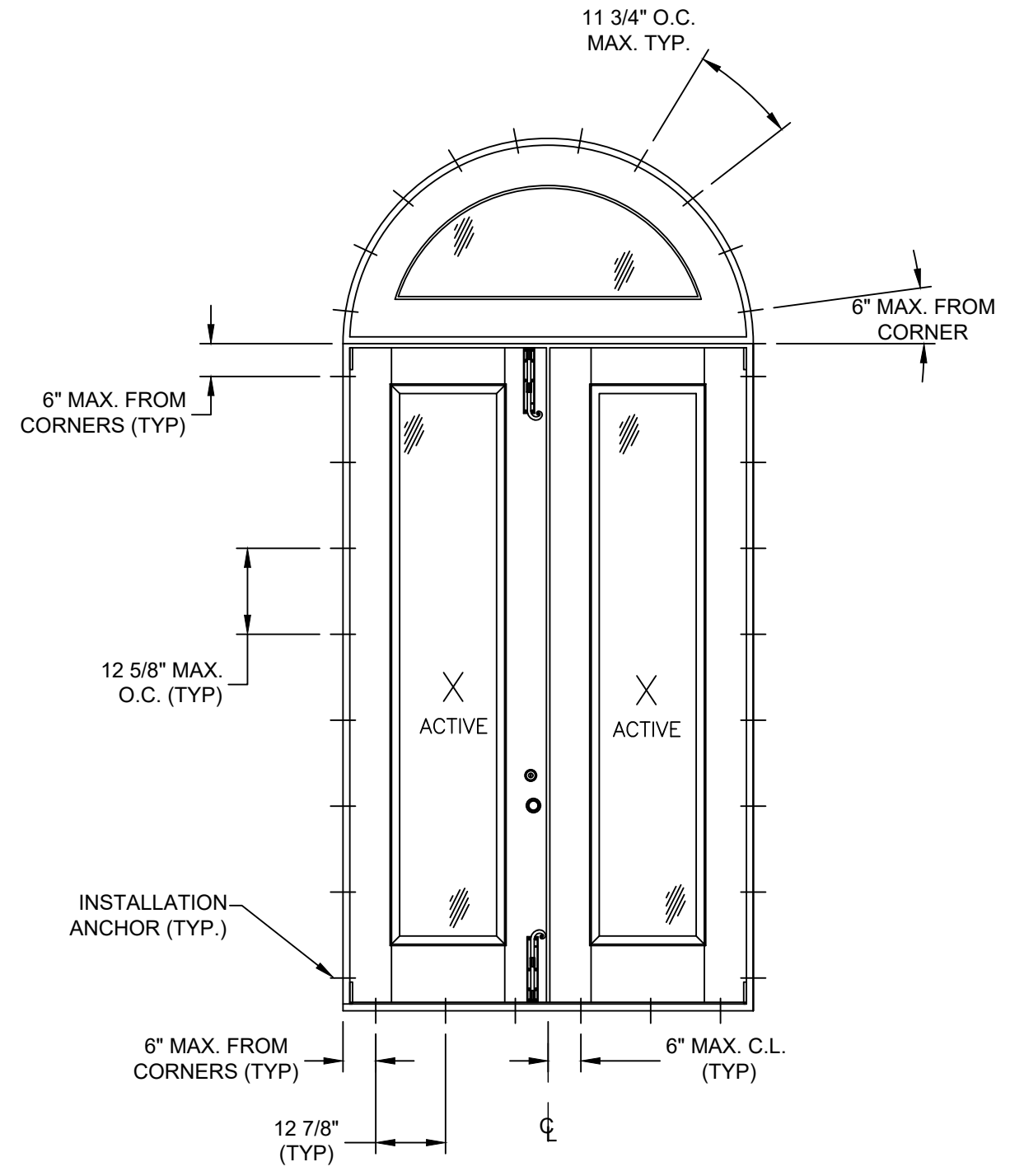
Robert J. Amoruso, P.E.

FL P.E. No. 49752



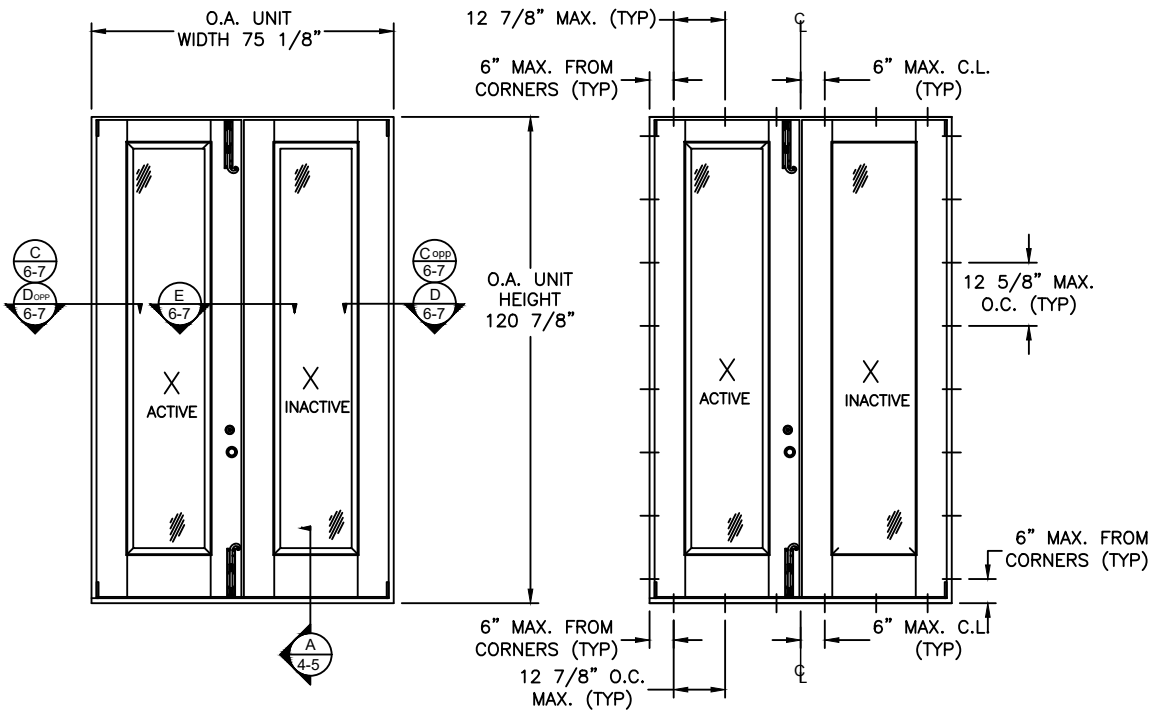
**ELEVATION**  
DOUBLE DOOR W/ TRANSOM  
INTERIOR VIEW

**OUTSWING ELEVATION SHOWN**  
**INSWING SIMILAR**



**ANCHOR LAYOUT**  
DOUBLE DOOR W/ TRANSOM  
INTERIOR VIEW

PROJECT #420-0611								01/24/21		IRJA		DATE		BY			
								D		UPDATE TO 7TH EDITION (2020) FBC		DESCRIPTION		REV			
NEW ERRA DOORS CORP, dba CUSTOM DOOR & MILLWORK 2787 N. AIRPORT RD., UNIT NO. 410 FORT MYERS, FLORIDA 33907												DATE: 09/25/08		DRAWING NO: CDM0003		SHEET: 2 OF 7	
TITLE: IMPACT DOUBLE GLAZED DOORS W/TRANSOM, O/S & I/S ELEVATION AND ANCHOR LAYOUT												DRAWN BY: BB		SCALE: N.T.S.		REV: D	
PREPARED BY: PTC PRODUCT DESIGN GROUP, LLC PO BOX 520775 LONGWOOD, FLORIDA 32752 FEBE C.A. NO.125935 Phone: 321.690.1788 Fax: 321.690.1789 Email: info@pte-corp.com												DATE: 09/25/08		DRAWING NO: CDM0003		SHEET: 2 OF 7	
Robert J. Amoruso, P.E. FL P.E. No. 49752																	

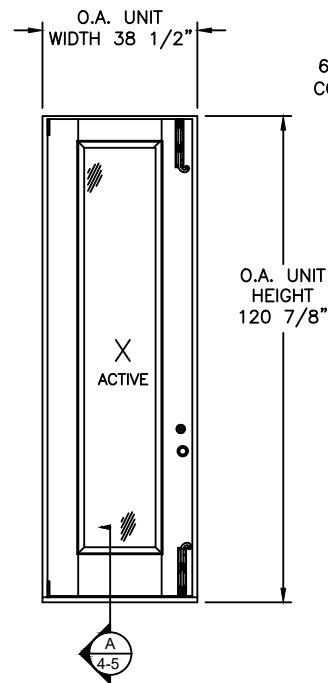


### ELEVATION

DOUBLE DOORS W/ O TRANSM  
INTERIOR VIEW

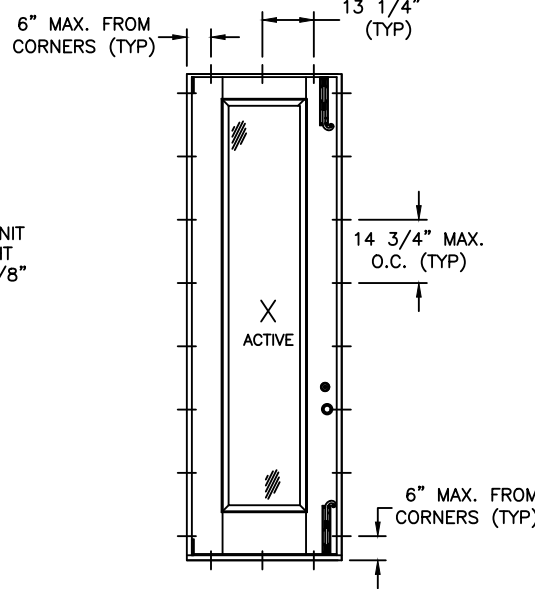
### ANCHOR LAYOUT

DOUBLE DOORS W/ O TRANSM  
INTERIOR VIEW



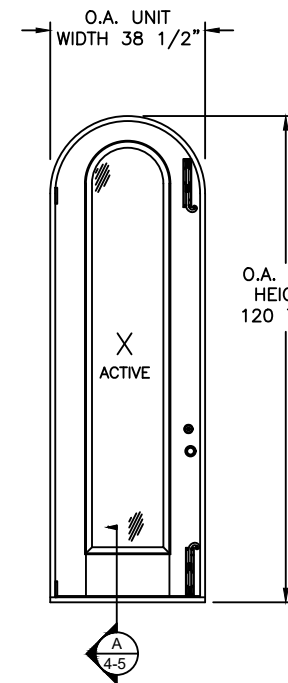
### ELEVATION

SINGLE DOOR W/ O TRANSM  
INTERIOR VIEW



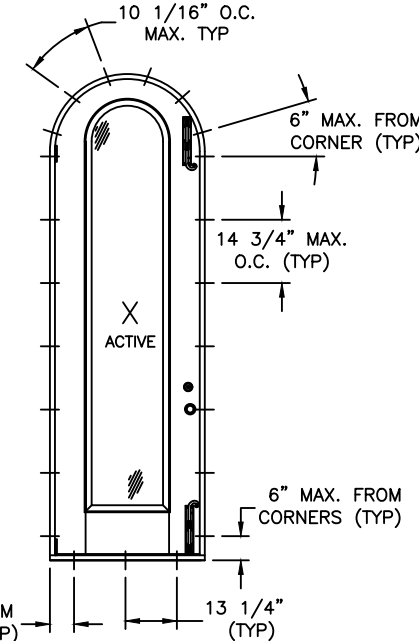
### ANCHOR LAYOUT

SINGLE DOOR W/ O TRANSM  
INTERIOR VIEW



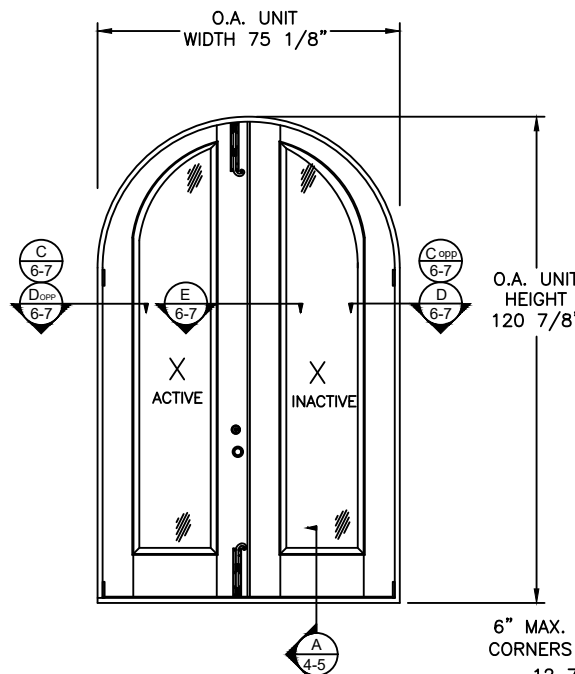
### ELEVATION

SINGLE ARCH TOP DOOR W/ O TRANSM  
INTERIOR VIEW



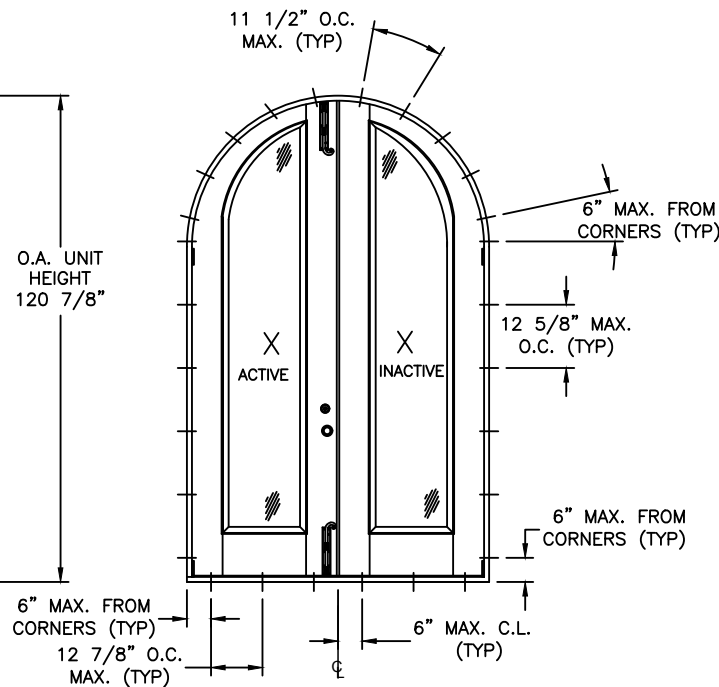
### ANCHOR LAYOUT

SINGLE ARCH TOP DOOR W/ O TRANSM  
INTERIOR VIEW



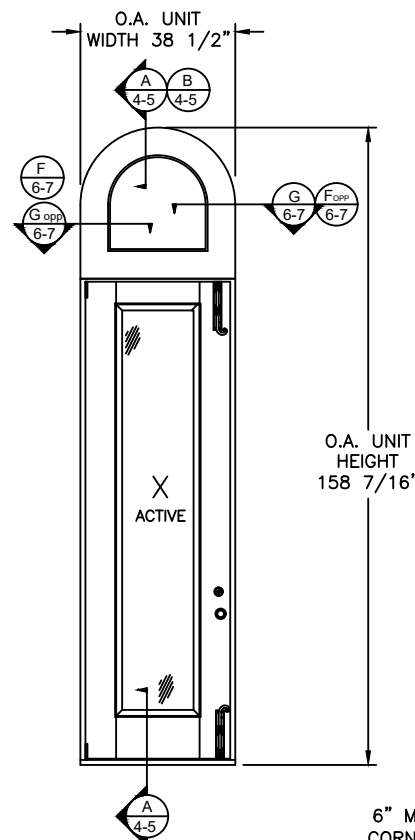
### ELEVATION

DOUBLE ARCH TOP DOORS W/ OUT TRANSM  
INTERIOR VIEW



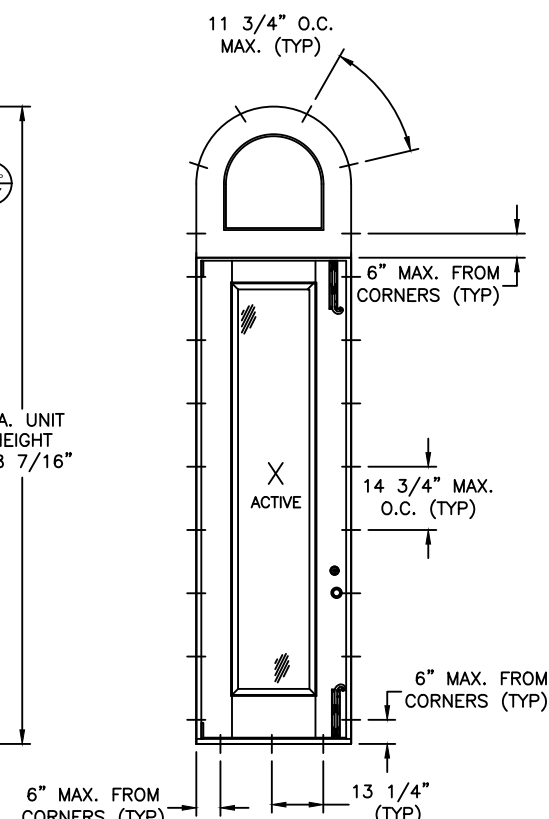
### ANCHOR LAYOUT

DOUBLE ARCH TOP DOORS W/ OUT TRANSM  
INTERIOR VIEW



### ELEVATION

SINGLE DOOR W/ TRANSM  
INTERIOR VIEW



### ANCHOR LAYOUT

SINGLE DOORS W/ TRANSM  
INTERIOR VIEW

PROJECT #420-0611

NEW ERRA DOORS CORP, dba CUSTOM DOOR & MILLWORK  
2787 N. AIRPORT RD., UNIT NO. 410  
FORT MYERS, FLORIDA 33907

Robert J. Amoruso, P.E.  
FL P.E. No. 49752

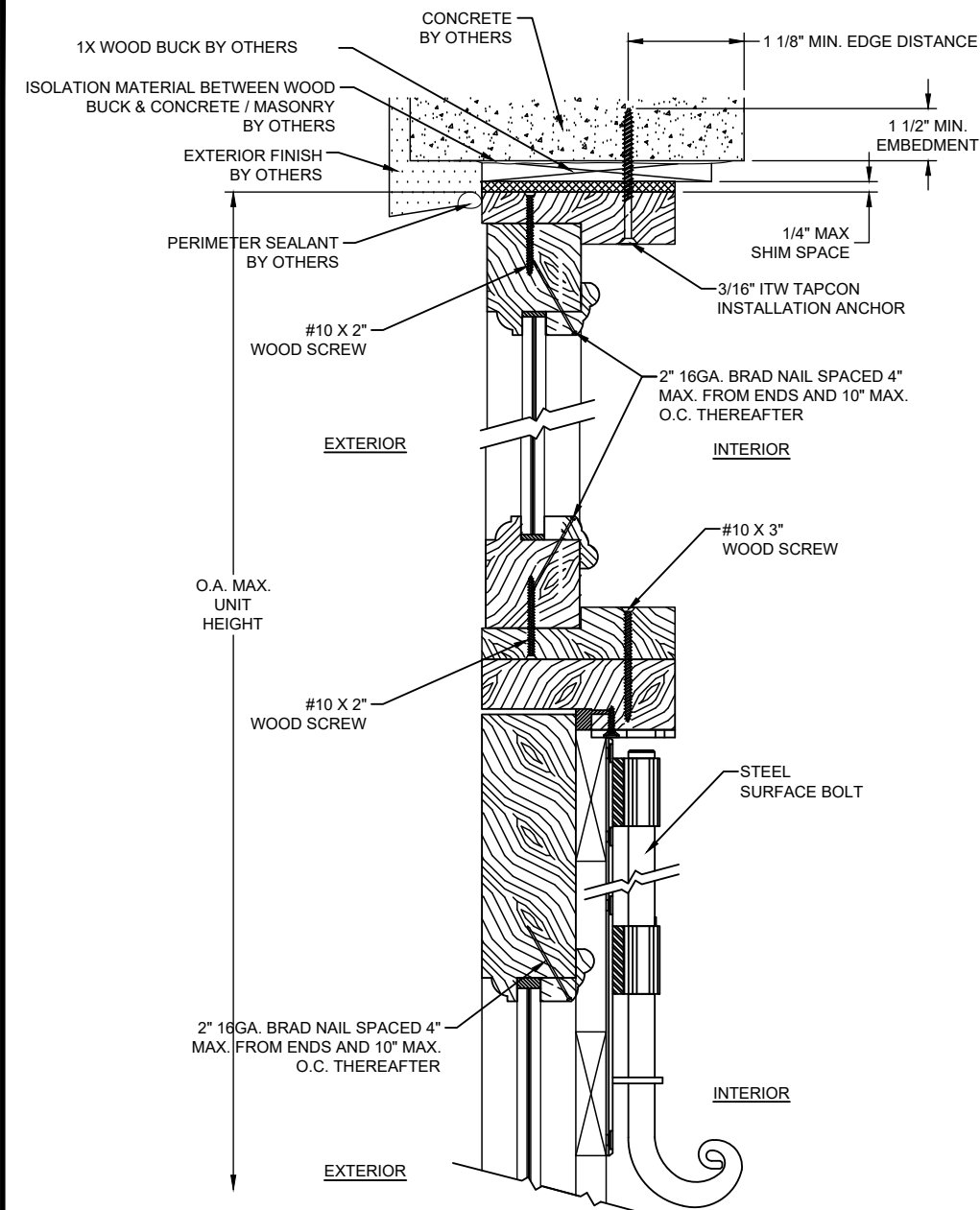
TITLE: IMPACT DOUBLE GLAZED DOORS W/TRANSM, O/S & I/S  
ADDITIONAL APPROVED CONFIGURATIONS

PREPARED BY: BB  
SCALE: N.T.S.  
DATE: 09/25/08  
DRAWING NO: CDM0003  
SHEET: 3 OF 7  
REV: D

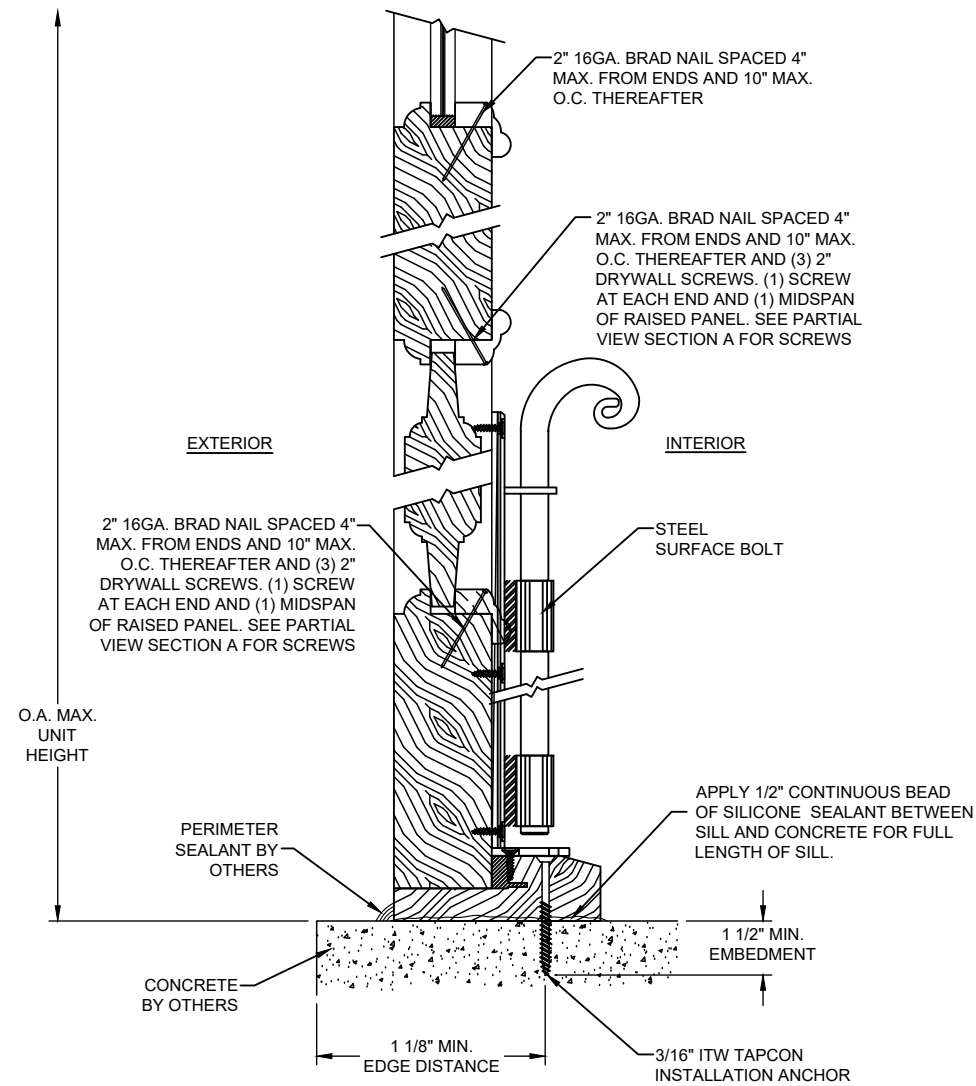
PTC PRODUCT DESIGN GROUP, LLC  
PO BOX 520775  
LONGWOOD, FLORIDA 32752  
PHONE: 321.690.1788  
FAX: 321.690.1789  
EMAIL: info@pte-corp.com

UPDATE TO 7TH  
EDITION (2020) FBC  
01/24/21 IRJA  
DATE  
BY

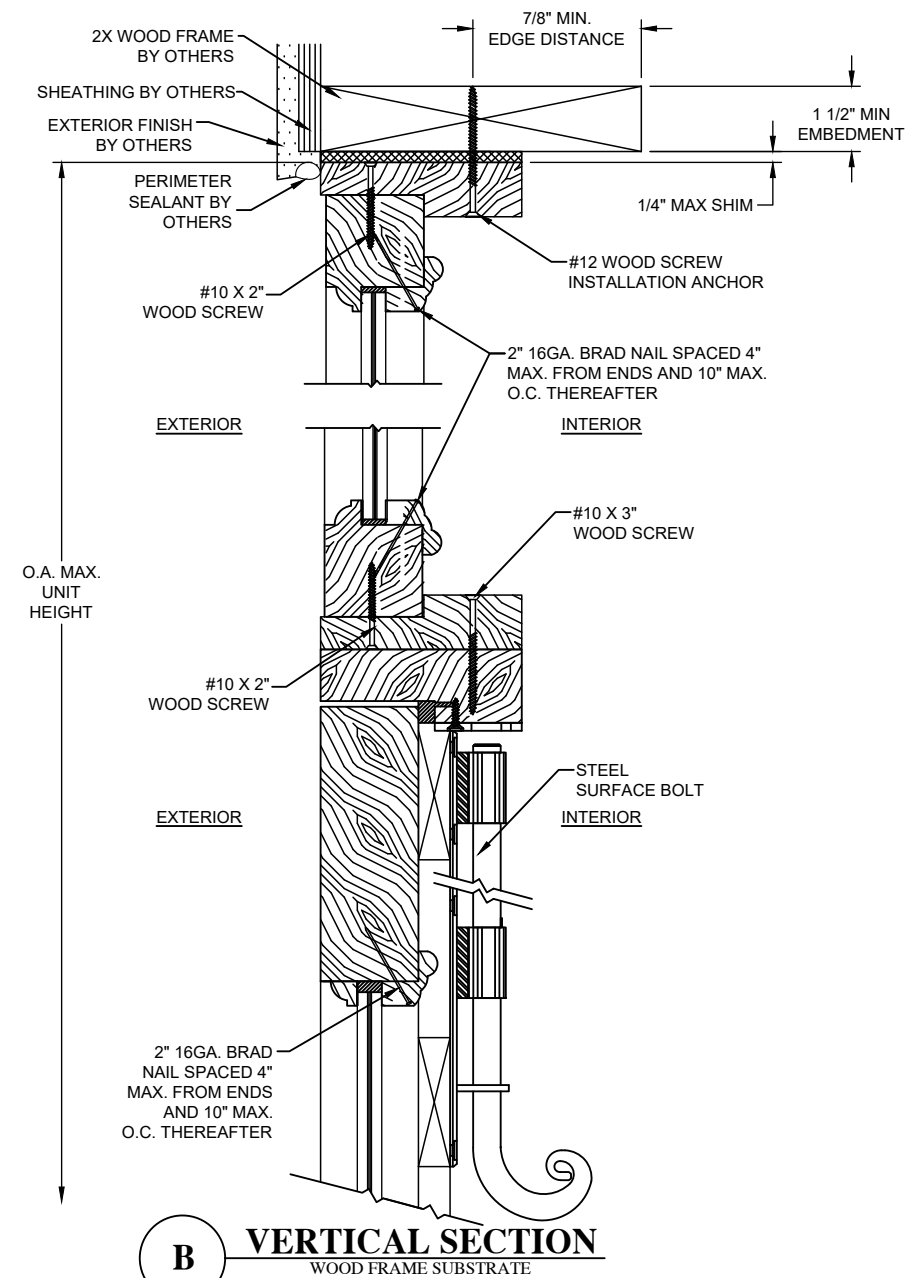
## OUTSWING INSTALLATION VERTICAL SECTION VIEWS



**A** **VERTICAL SECTION**  
CONCRETE / MASONRY SUBSTRATE



## A VERTICAL SECTION



## B VERTICAL SECTION

PROJECT #420-0611

NEW ERRA DOORS CORP, dba CUSTOM DOOR & MILLWORK  
2787 N ABBOTT RD UNIT NO 410


Z/87 N. AIRPORT RD., UNIT NO. 410  
FORT MYERS FL 33907

**FORT MIERS, FLORIDA 33907**

## OUTSWING INSTALLATION - VERTICAL SECTIONS

BY:	DRAWN BY:	DATE: 09/25/08
---	---	----------------

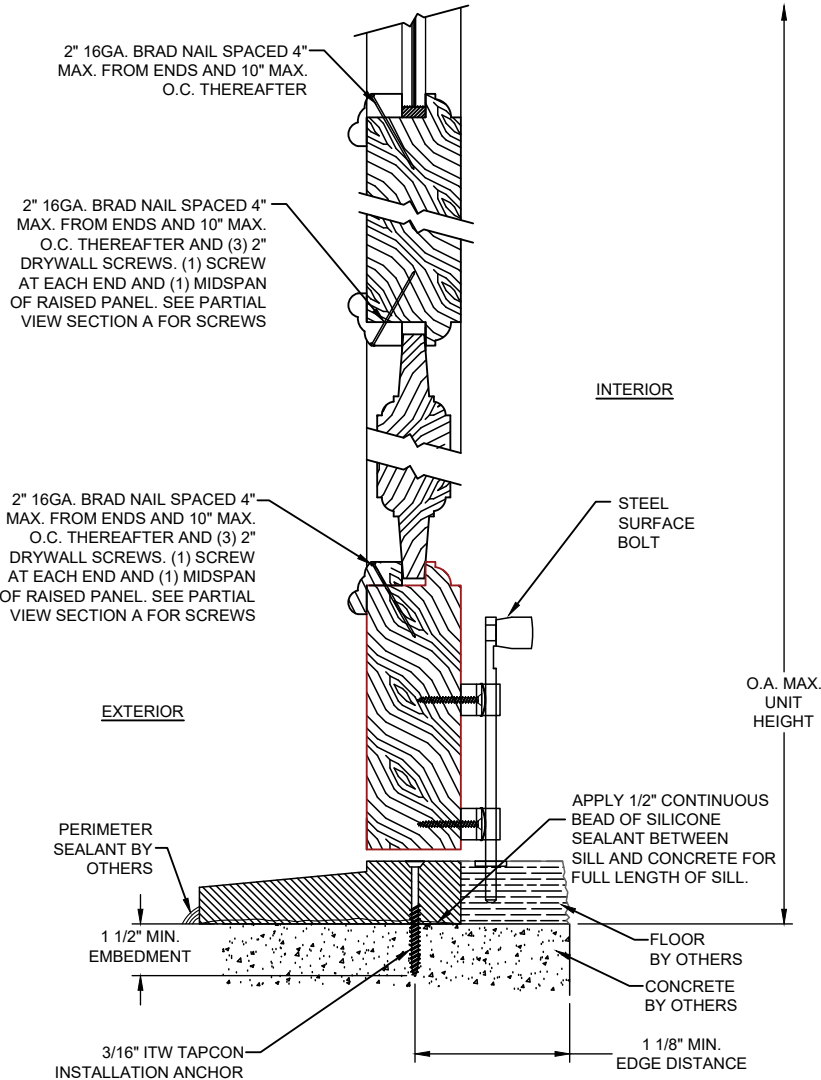
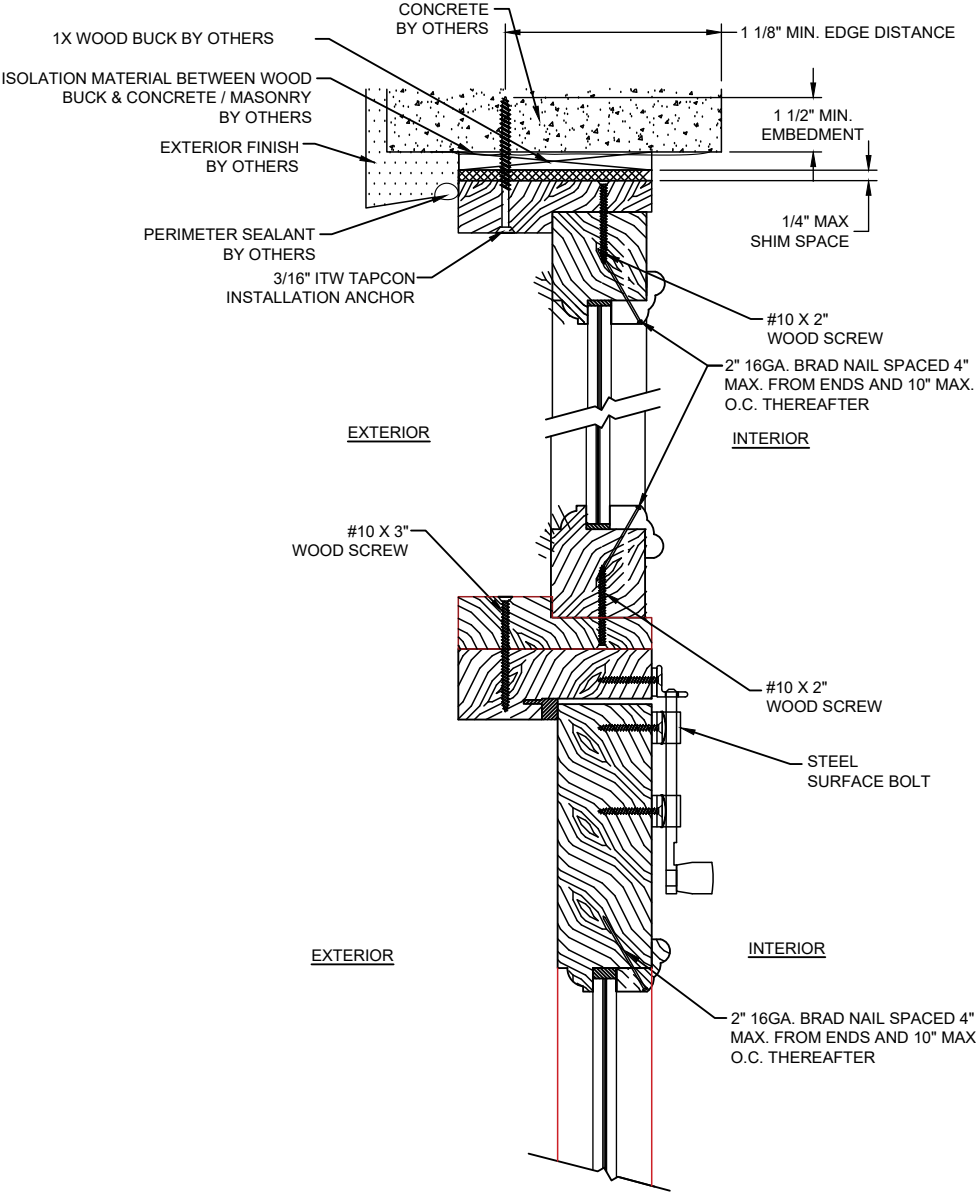
	SCALE:	
	DRAWING NO:	


**T DESIGN GROUP, LLC** Phone: 321.690.1788  
 BOX 520775  
 N.T.S. CDM0003  
 REV: SHEET:

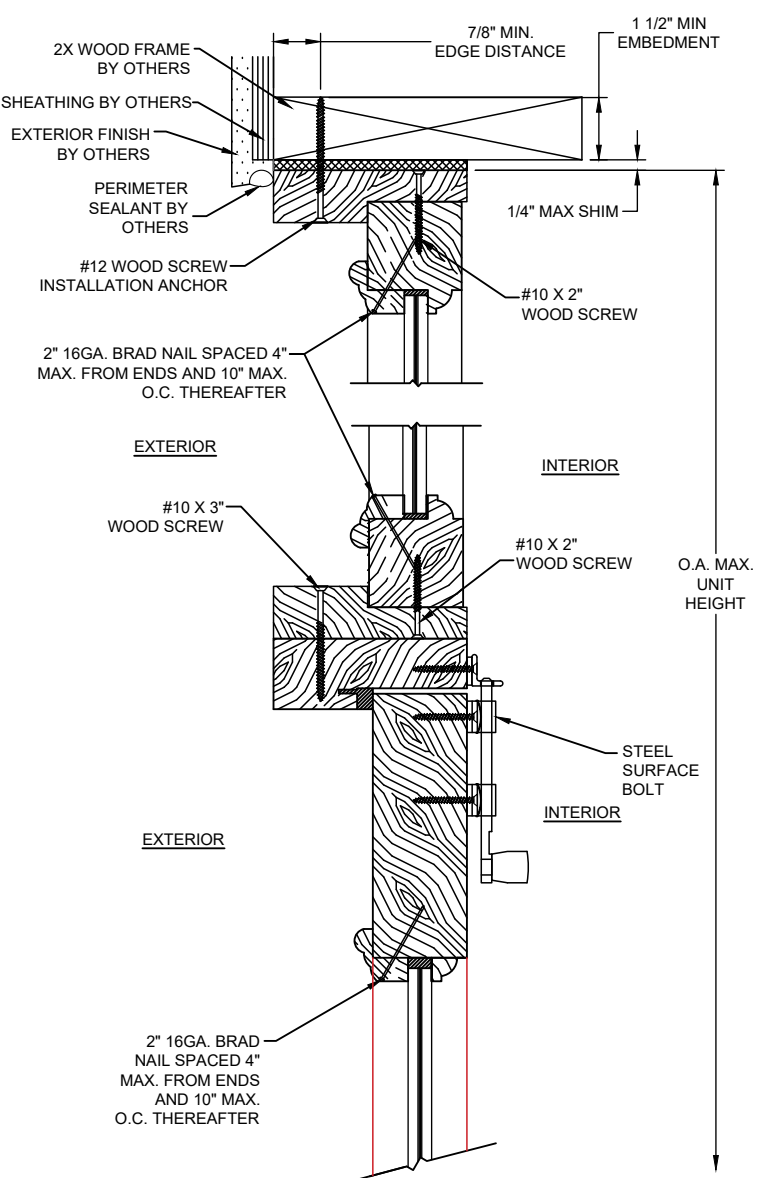
ID, FLORIDA 32752 Fax: 321.690.1789 Email: info@ptc-corp.com C.A. NO. 25935	D	4 OF 7
--	---	--------

Robert J. Amoruso, P.E.  
FL P.E. No. 49752

INSWING INSTALLATION  
VERTICAL SECTION VIEWS



A VERTICAL SECTION  
CONCRETE / MASONRY SUBSTRATE



B VERTICAL SECTION  
WOOD FRAME SUBSTRATE

PROJECT #420-0611

NEW ERRA DOORS CORP, dba CUSTOM DOOR & MILLWORK  
2787 N. AIRPORT RD., UNIT NO. 410  
FORT MYERS, FLORIDA 33907

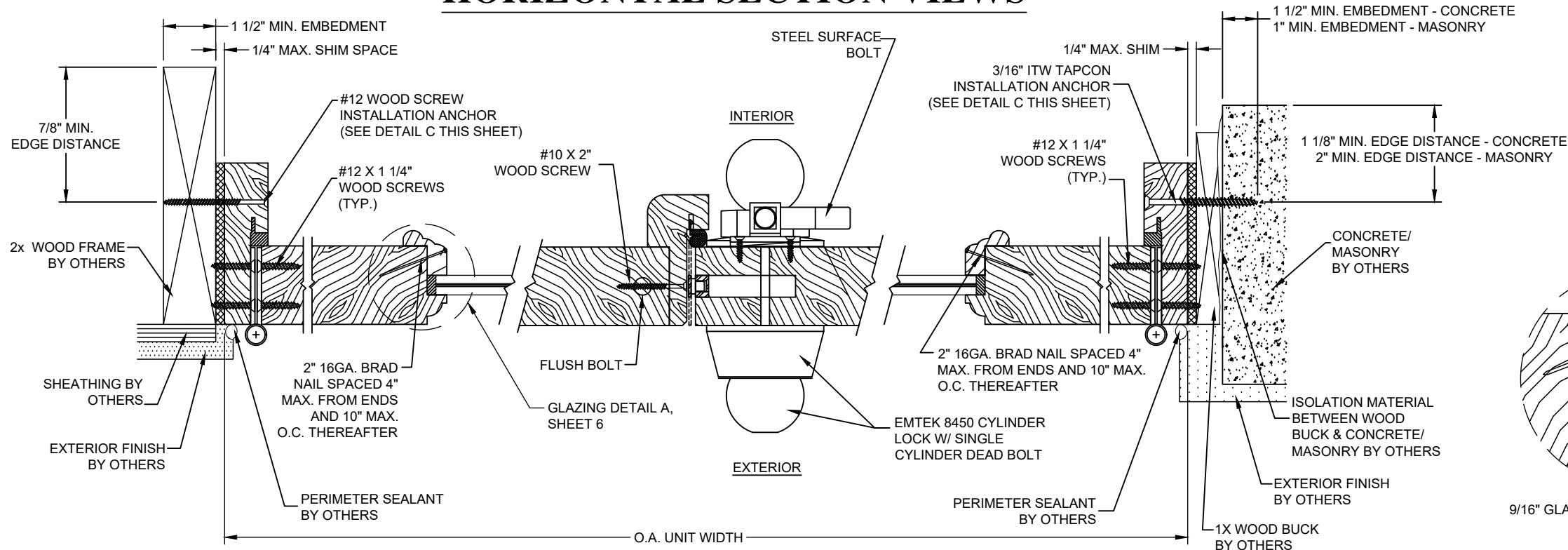
TITLE: IMPACT DOUBLE GLAZED DOORS W/TRANSOM, O/S & I/S  
INSWING INSTALLATION - VERTICAL SECTIONS

PREPARED BY: BB  
DATE: 09/25/08  
SCALE: N.T.S.  
REV: D  
SHEET: 5 OF 7  
DRAWING NO: CDM0003

PTC PRODUCT DESIGN GROUP, LLC  
PO BOX 520775  
LONGWOOD, FLORIDA 32752  
Phone: 321.690.1788  
Fax: 321.690.1789  
Email: info@ptc-corp.com

Robert J. Amoruso, P.E.  
FL P.E. No. 49752

## OUTSWING INSTALLATION HORIZONTAL SECTION VIEWS

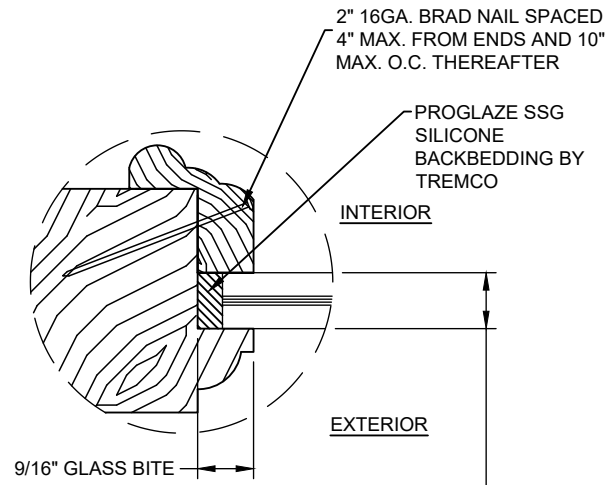


**C ) HORIZONTAL SECTION**  
WOOD FRAME SUBSTRATE

## E HORIZONTAL SECTION

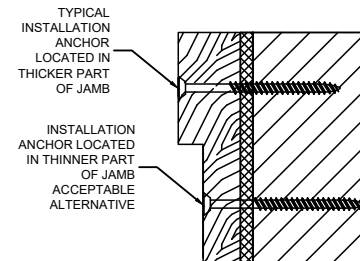
## D HORIZONTAL SECTION

CONCRETE / MASONRY SUBSTRATE



9/16" O.A. LAMINATED GLASS CONSISTING OF:  
1/4" TEMPERED GLASS, 0.100" PVB  
LAMINATE BY UVEKOL, 1/4" HEAT STRENGTHENED GLASS

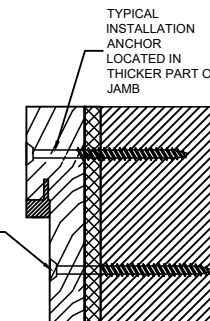
## GLAZING DETAIL A



**NOTE: ONLY ONE  
INSTALLATION ANCHOR  
REQUIRED, EITHER IN  
THICKER OR THINNER  
PART OF JAMB; NOT  
BOTH.**

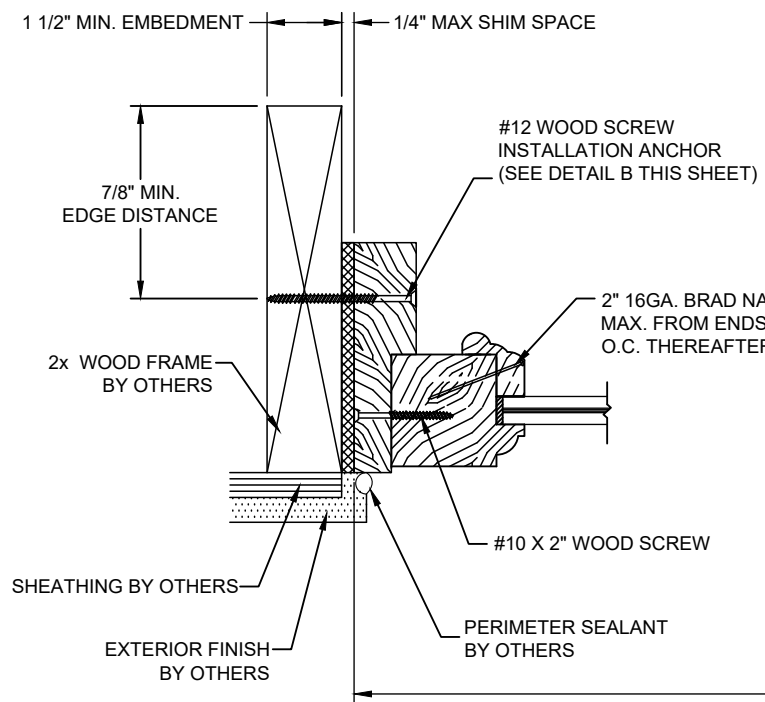
## **DETAIL B**

### **INSTALLATION ANCHOR LOCATION ALTERNATIVES**

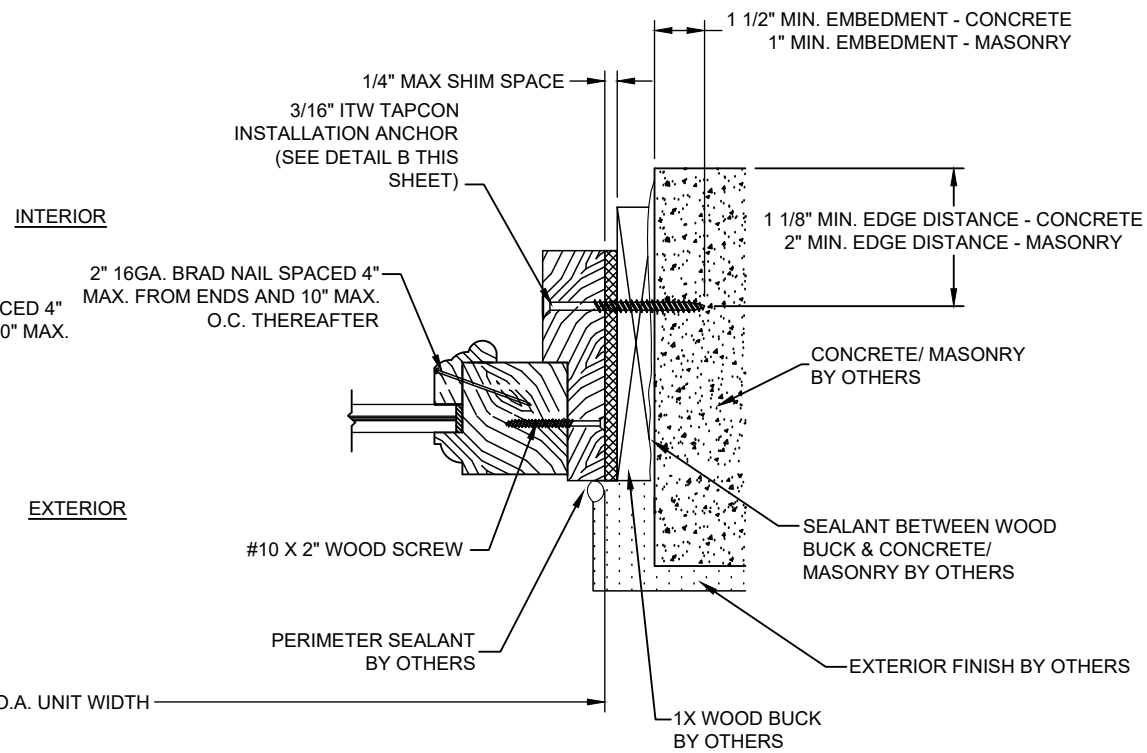


## **DETAIL C**

### **INSTALLATION ANCHOR LOCATION ALTERNATIVES**



## F) HORIZONTAL SECTION



## G HORIZONTAL SECTION

PROJECT #420-0611

**NEW ERRA DOORS CORP. dba CUSTOM DOOR & MILLWORK**  
2787 N. AIRPORT RD., UNIT NO. 410  
FORT MYERS, FLORIDA 33907

**TITLE: IMPACT DOUBLE GLAZED DOORS W/TRANSOM, O/S & I/S**

PREPARED BY: \_\_\_\_\_ DRAWN BY: \_\_\_\_\_ DATE: \_\_\_\_\_

BB	09/25/08
----	----------

**SCALE:** 1" = 1'-0"

**DRAWING NO:** CDM0003

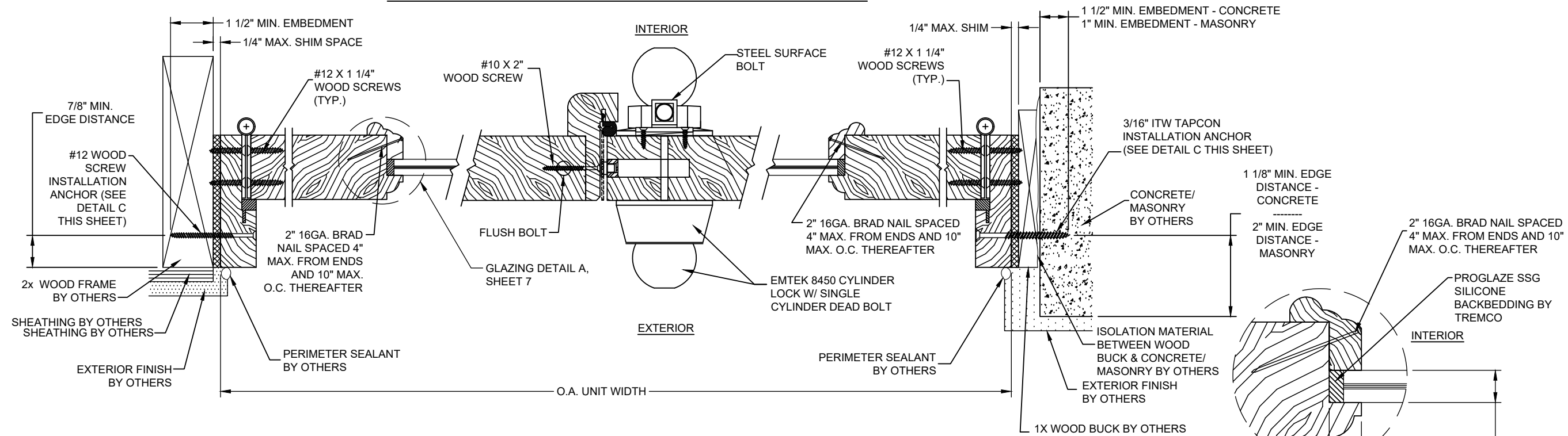
PTC PRODUCT DESIGN GROUP, LLC  
 PO BOX 520775  
 Phone: 321.690.1788  
 REV: SHEET: 02/10/2000

LONGWOOD, FLORIDA 32752  
FBPE C.A. NO. 25935  
Email: [info@ptc-corp.com](mailto:info@ptc-corp.com)

Robert J. Amoruso, P.E.  
FL P.E. No. 49752



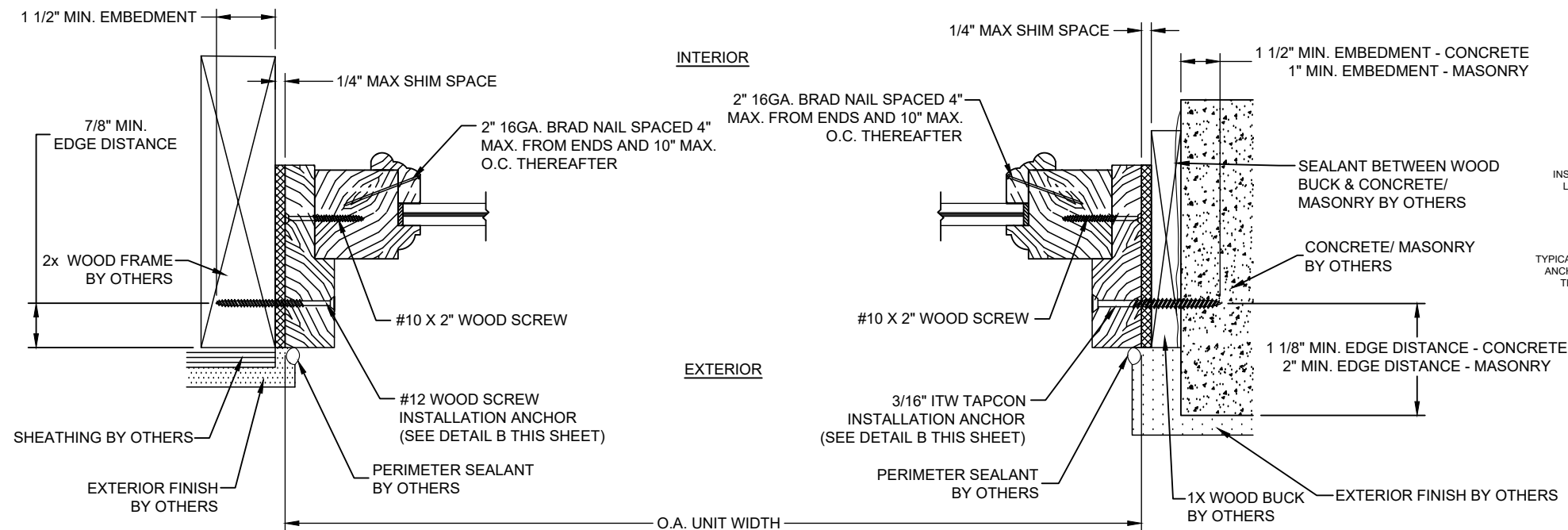
## INSWING INSTALLATION HORIZONTAL SECTION VIEWS



**C) HORIZONTAL SECTION**  
WOOD FRAME SUBSTRATE

**E** ) **HORIZONTAL SECTION**  
ASTRAGAL

**D** **HORIZONTAL SECTION**  
CONCRETE / MASONRY SUBSTRATE



## F HORIZONTAL SECTION

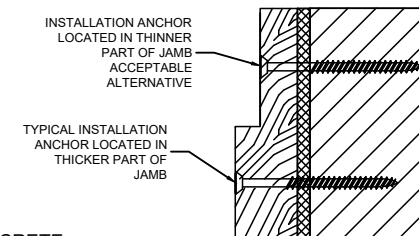
WOOD FRAME SUBSTRATE

## G HORIZONTAL SECTION

CONCRETE / MASONRY SUBSTRATE

9/16" O.A. LAMINATED GLASS CONSISTING OF:  
1/4" TEMPERED GLASS, 0.100" PVB  
LAMINATE BY UVEKOL, 1/4" HEAT STRENGTHENED GLASS

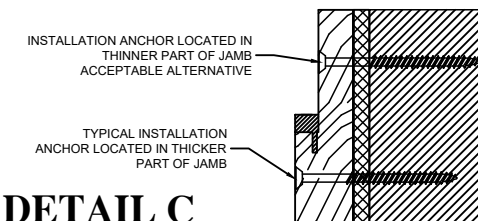
## GLAZING DETAIL A



**NOTE: ONLY ONE  
INSTALLATION ANCHOR  
REQUIRED, EITHER IN  
THICKER OR THINNER  
PART OF JAMB; NOT  
BOTH.**

## **DETAIL B**

### **INSTALLATION ANCHOR LOCATION ALTERNATIVES**



## **DETAIL C**

### **INSTALLATION ANCHOR LOCATION ALTERNATIVES**

PROJECT #420-0611

**NEW ERRA DOORS CORP, dba CUSTOM DOOR & MILLWORK**  
2787 N. AIRPORT RD., UNIT NO. 410

**TITLE: IMPACT DOUBLE GLAZED DOORS W/TRANSOM, O/S & I/S  
INSWING INSTALLATION - HORIZONTAL SECTIONS / GLAZING DATA**

	DRAWN BY:	BB	DATE:	09/25/08
	SCALE:		DRAWING NO:	

PTC PRODUCT DESIGN GROUP, LLC PO BOX 520775 LONGWOOD, FLORIDA 32752 FBPECA, NO. 25935	Phone: 321.690.1788 Fax: 321.690.1789 Email: info@ptc-corp.com	REV: D	SHEET: 7 OF 7
--	--	--------	---------------

Robert J. Amoruso, P.E.  
FL P.E. No. 49752